



PARTS CATALOG FOR
SSK V2 MONSTER TRUCK ARTR & RTR CAR

No.6713-F



SSK V.2

1/10 4WD

NITRO POWERED MONSTER TRUCK

Manufactured by **THUNDER TIGER CORPORATION**

<http://www.thundertiger.com>



**Thunder
Tiger**

No.6713-F

SSK V.2

1/10 4WD

NITRO POWERED MONSTER TRUCK
Features

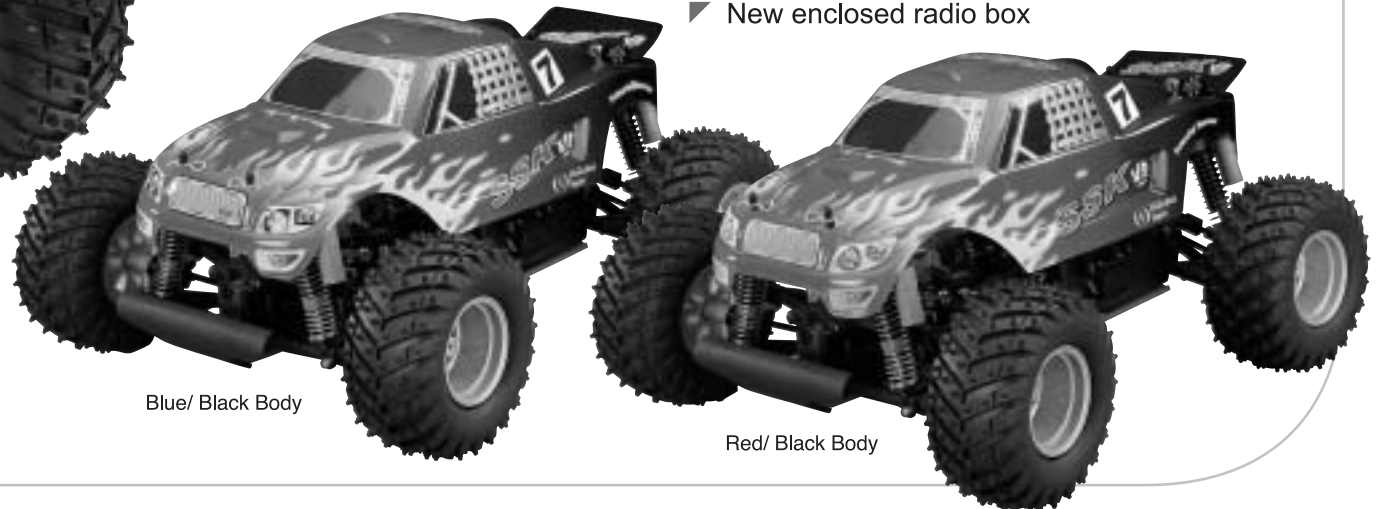
- ✔ 100% Factory assembled
- ✔ 2-Channel radio installed
- ✔ Metal gear steering servo
- ✔ New printed body w/ decals
- ✔ 2 Speed transmission equipped
- ✔ Super power PRO-18BXS pull start engine
- ✔ Aluminum front servo saver top plate and transmission brace.
- ✔ Countersunk aluminum chassis
- ✔ Metal FR knuckle
- ✔ Double wishbone suspension, front/rear
- ✔ Long travel, oil-filled composite shocks
- ✔ CVA shaft, front
- ✔ Performance manifold and metal tuned pipe
- ✔ New enclosed radio box



READY TO RUN
RTR



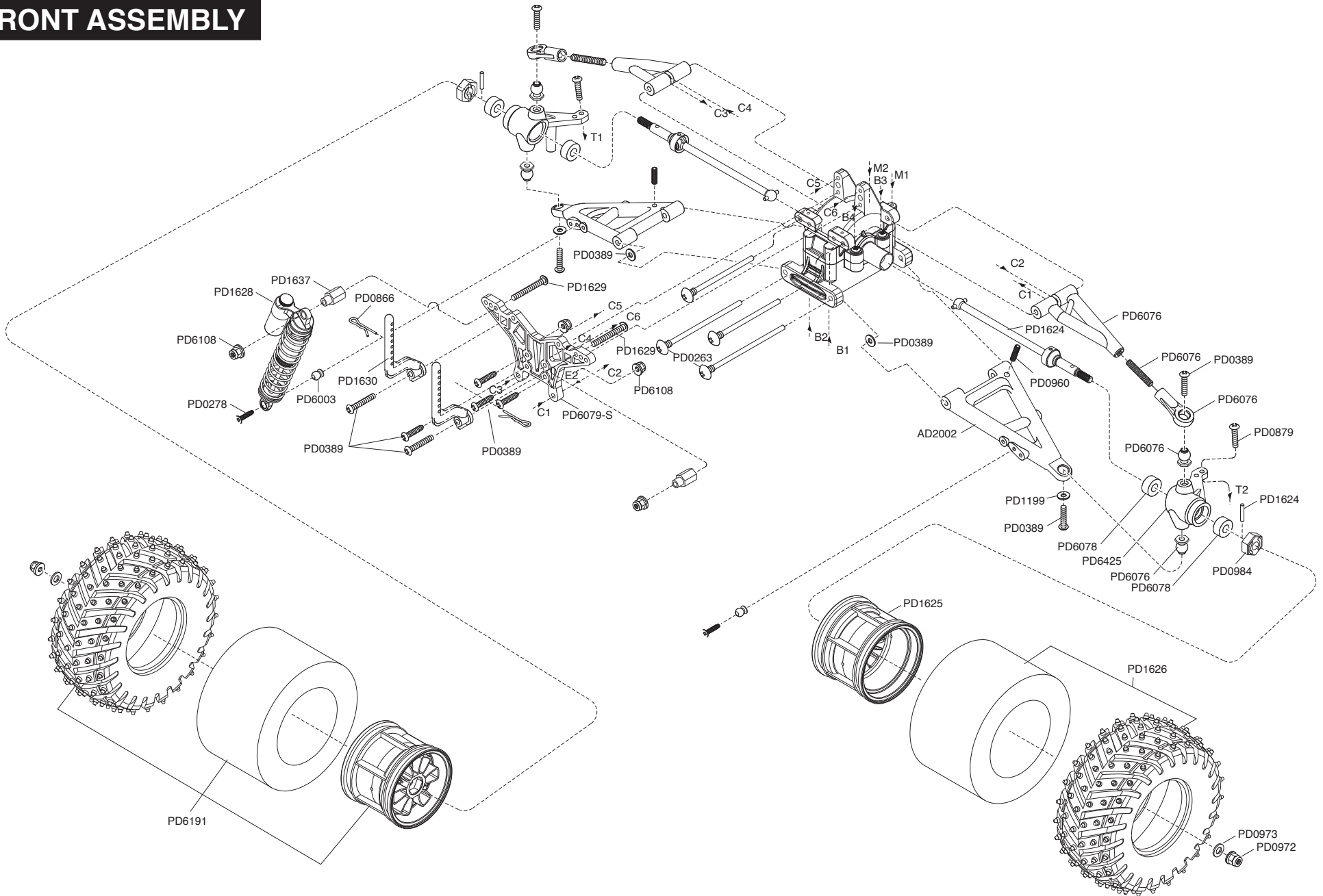
THUNDER TIGER PRO-18BXS
ENGINE INCLUDED



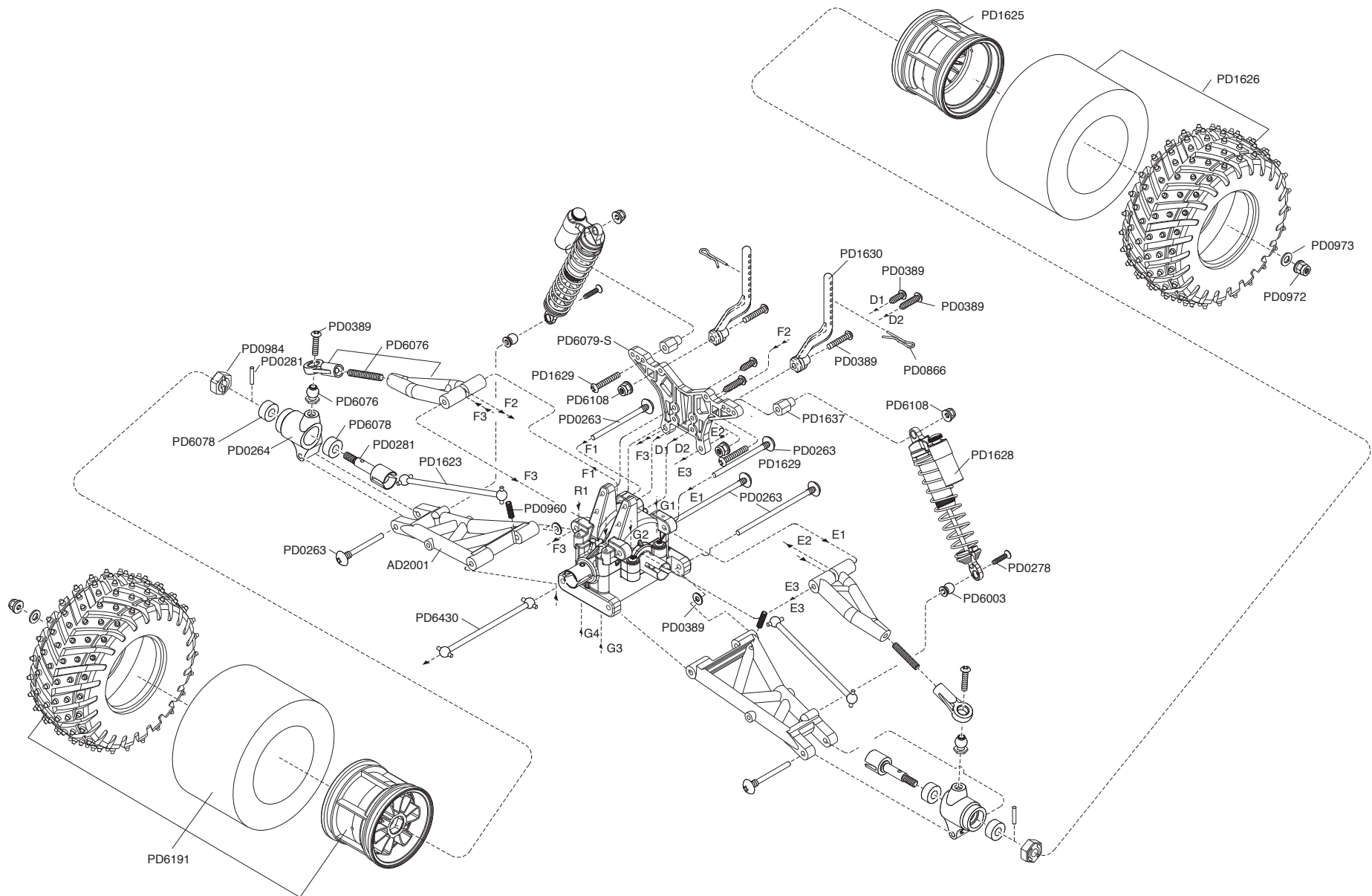
Blue/ Black Body

Red/ Black Body

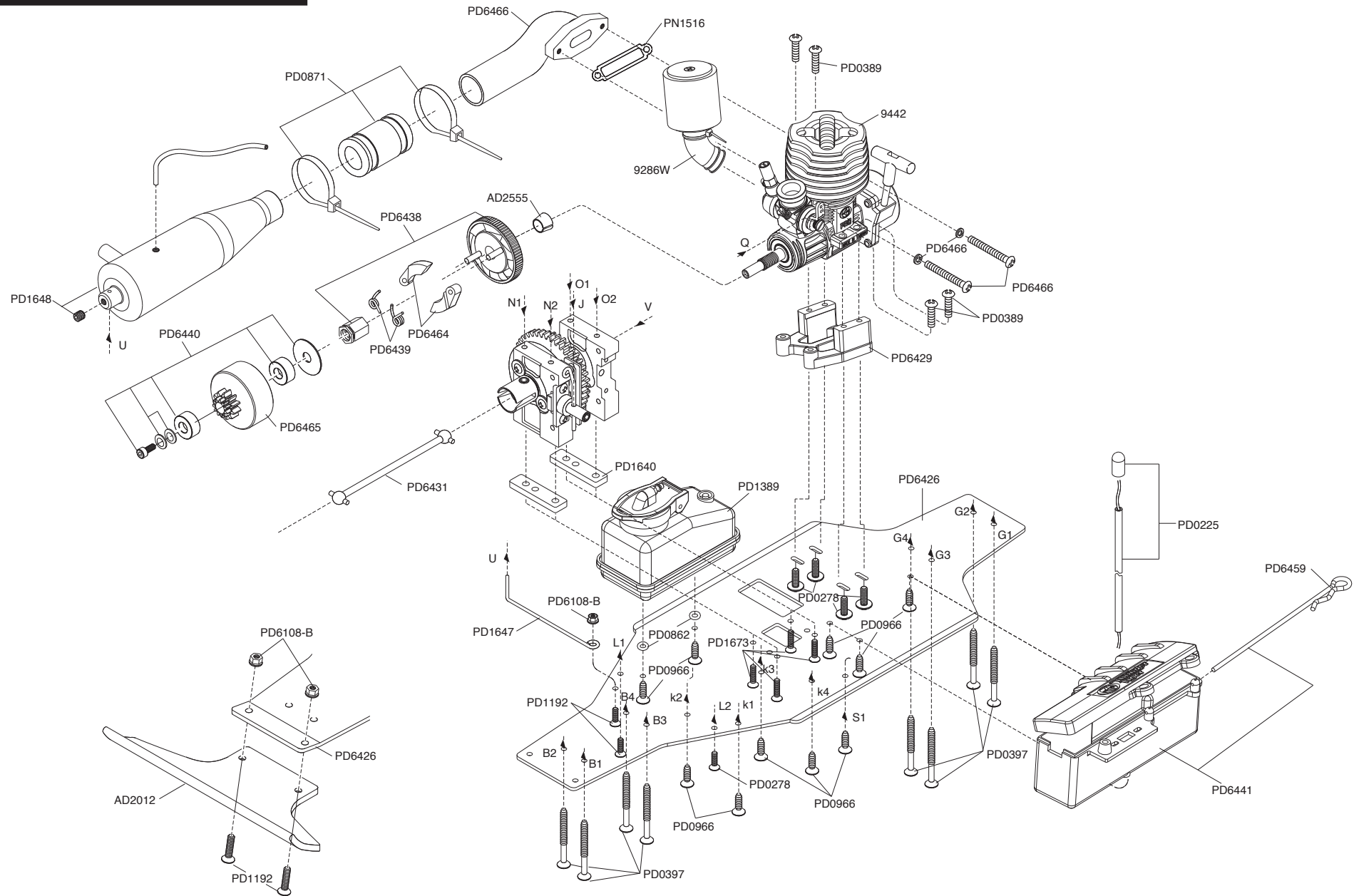
FRONT ASSEMBLY



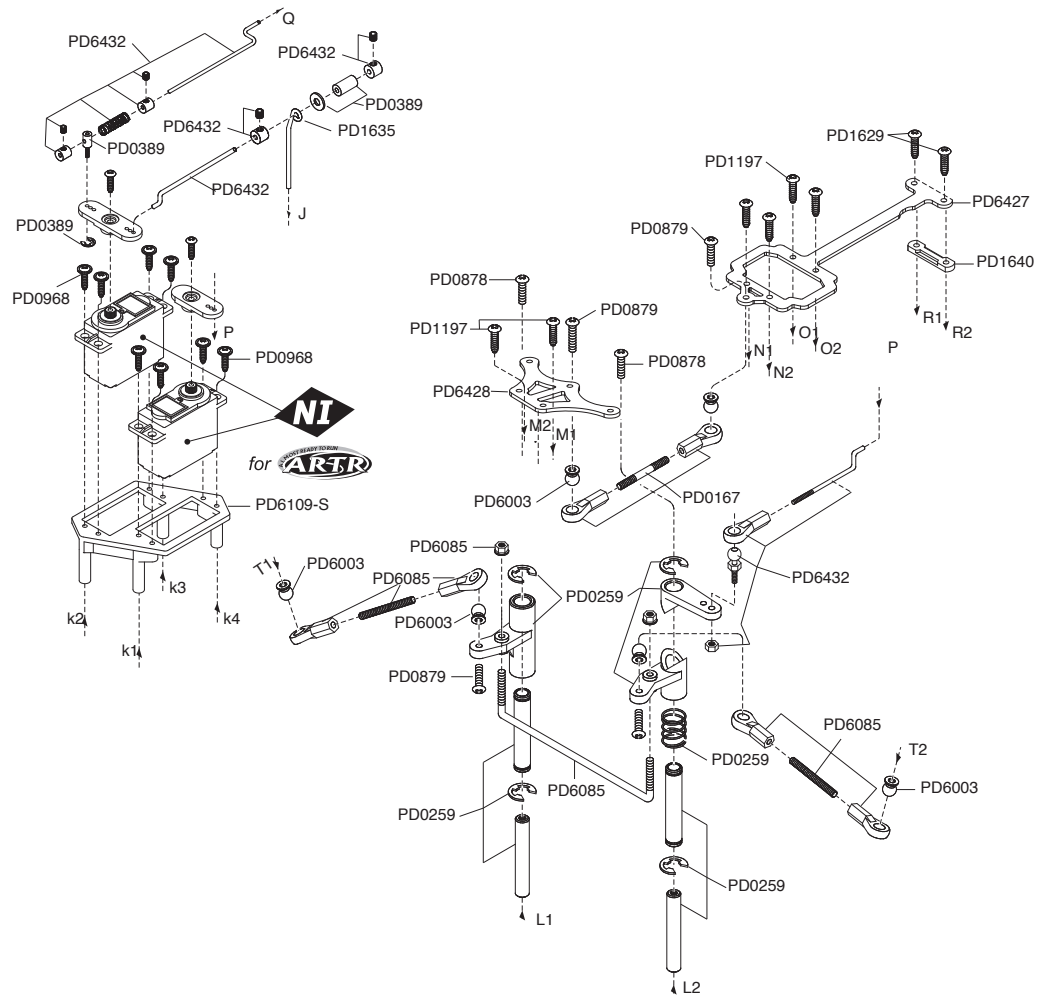
REAR ASSEMBLY



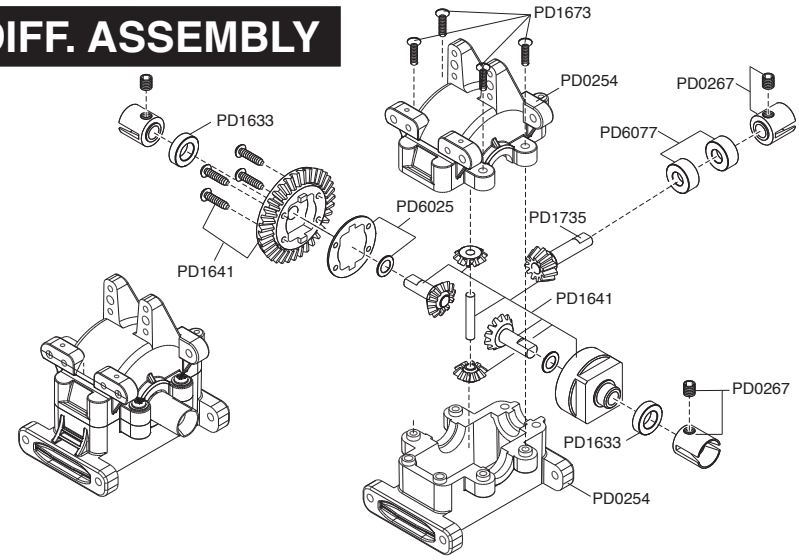
CHASSIS ASSEMBLY



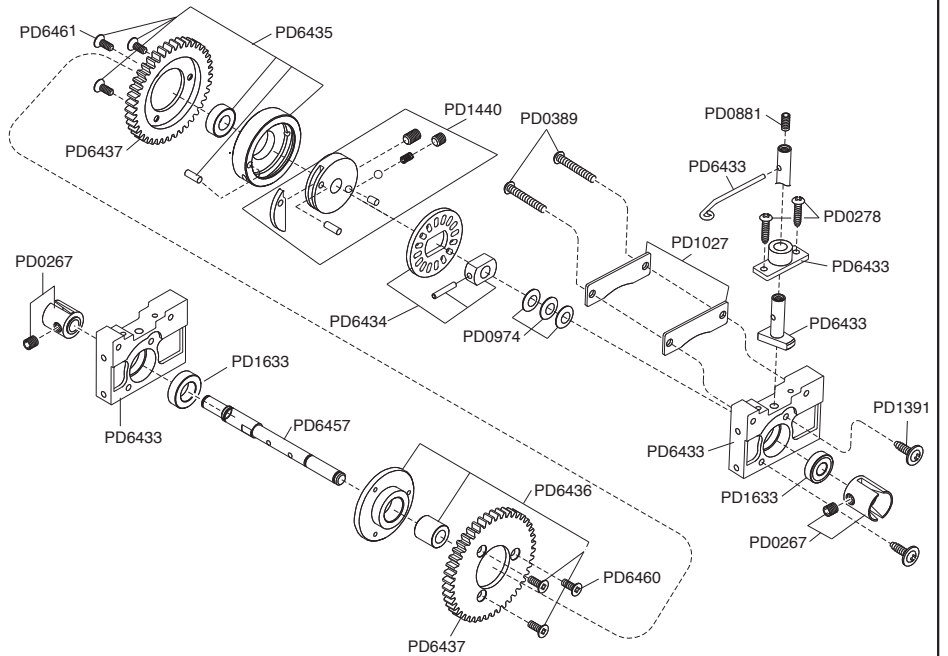
SERVO TRAY ASSEMBLY



DIFF. ASSEMBLY

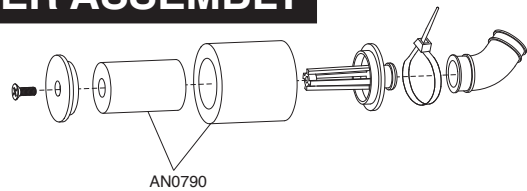


CENTER ASSEMBLY

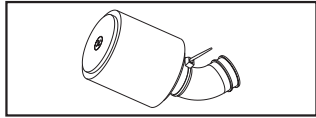


AIR CLEANER ASSEMBLY

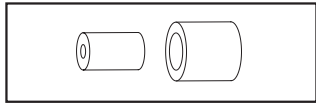
9286W



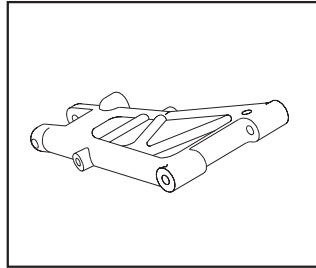
SSK V2 ARTR/RTR PARTS LIST



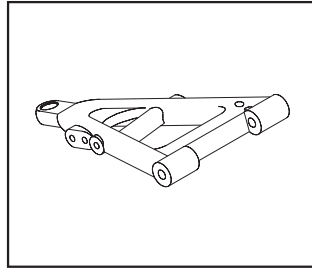
9286W AIR FILTER 12/15
WHITE



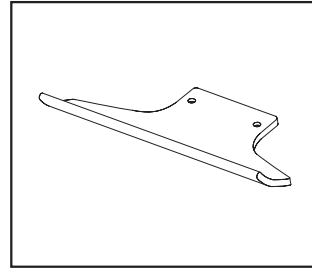
AN0790 FOAM FILTER (3)



AD2001 RR LOWER ARM (2)



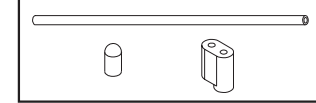
AD2002 FR LOWER ARM (2)



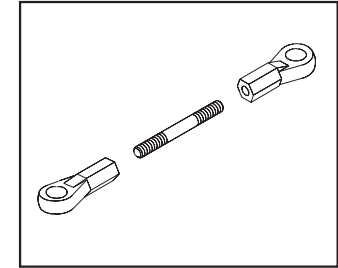
AD2012 BUMPER



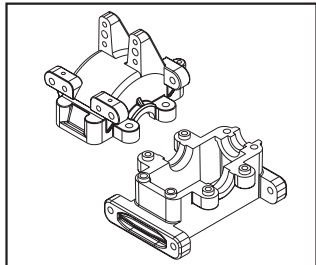
AD2555 FLYWHEEL COLLET,
1/10



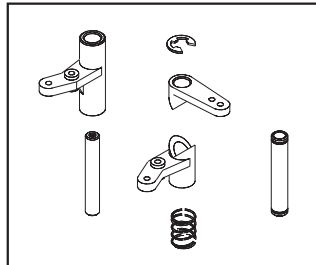
PD0225 ANTENNA BAG



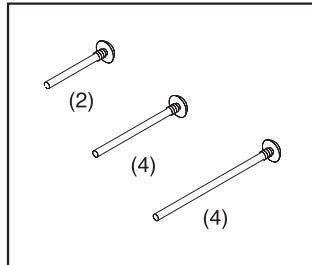
PD0167 FR TORQUE ROD



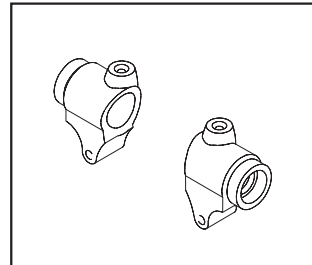
PD0254 TRANSMISSION CASE



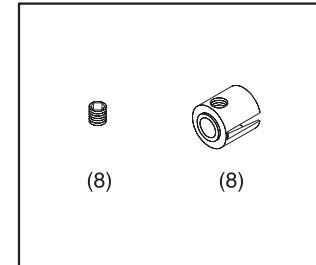
PD0259 SERVO SAVER SET



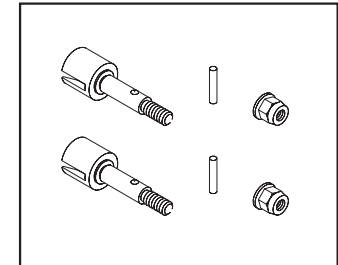
PD0263 SUSPENSION
HINGE PIN



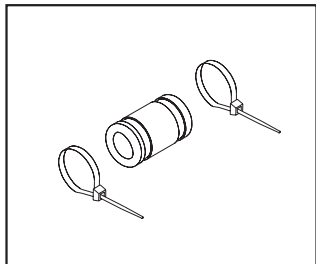
PD0264 REAR HUB



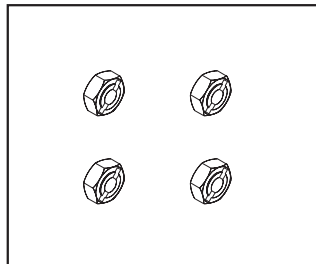
PD0267 DRIVE CUP



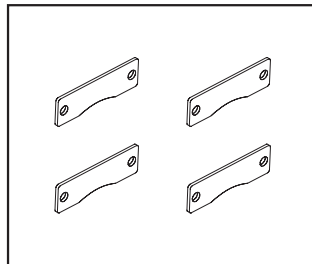
PD0281 WHEEL AXLE, TS/SS



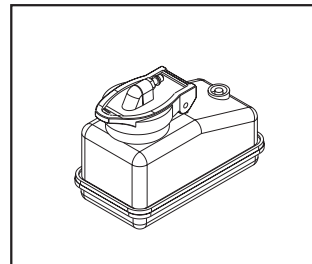
PD0871 COUPLER TUBE



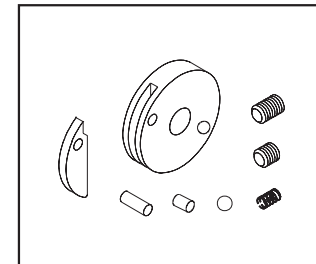
PD0984 HEX WHEEL
ADAPTER, 12mm



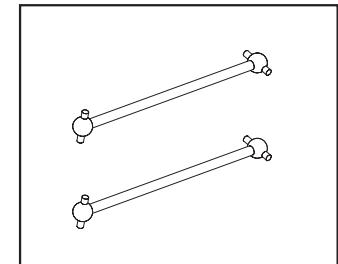
PD1027 BRAKE PAD SET(4)



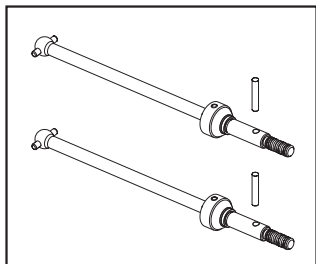
PD1389 FUEL TANK, 75cc



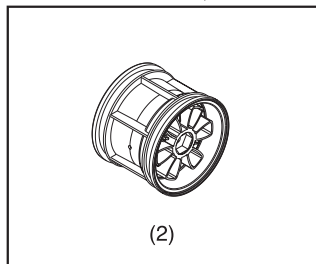
PD1440 2 SPD CLUTCH HUB,
MTA4



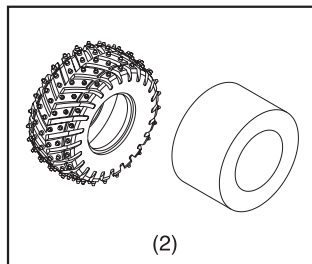
PD1623 REAR DRIVE SHAT



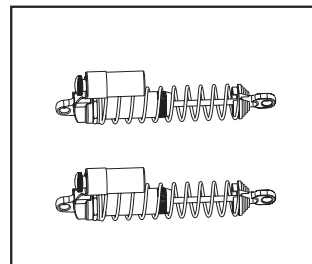
PD1624 FR CVA DRIVE SHAFTS



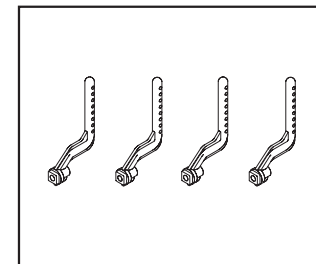
PD1625 WHEELS
(2)



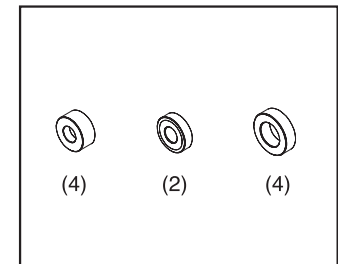
PD1626 TIRES W/FOAM
(2)



PD1628 SHOCK SET

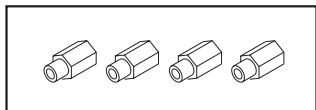


PD1630 BODY POSTS

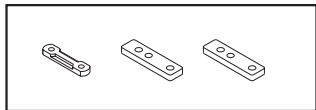


PD1633 DIFF BEARING SET
(4) (2) (4)

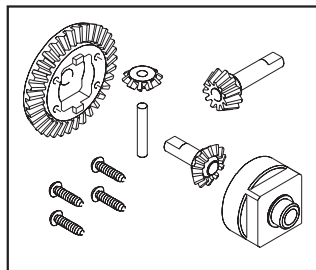
SSK V2 ARTR/RTR PARTS LIST



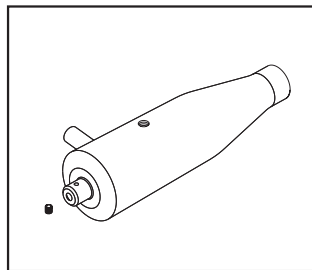
PD1637 SHOCK MOUNT SET



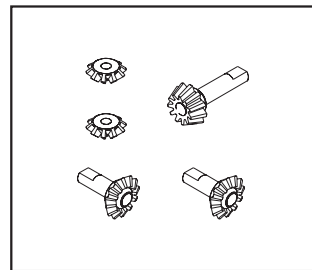
PD1640 SPACER SET



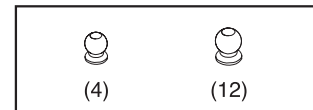
PD1641 DIFFERENTIAL SET



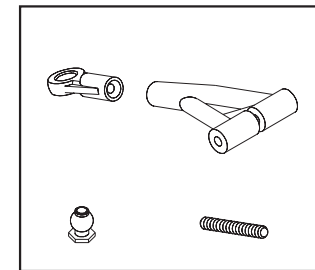
PD1648 TUNE PIPE, 1/10



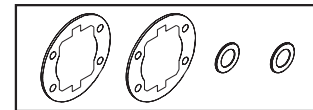
PD1735 DIFF PINION 11T/SSR



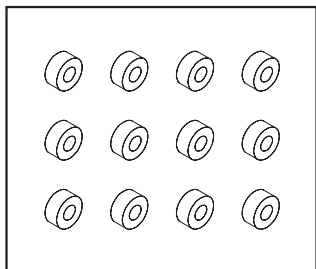
PD6003 PILLOW BALL



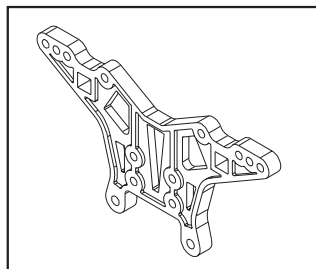
PD6076 FRONT UPPER ARM



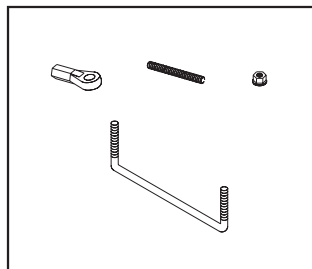
PD6025 DIFFERENTIAL GASKET



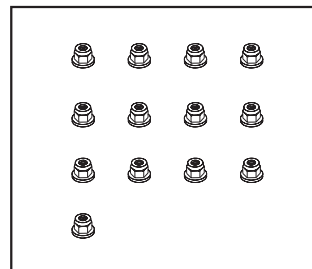
PD6078 AXLE BUSHING SET



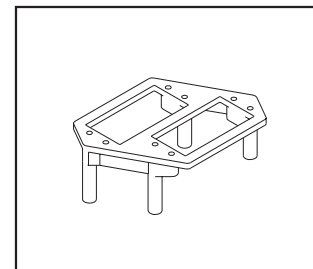
PD6079-S RR/FR SHOCK TOWER



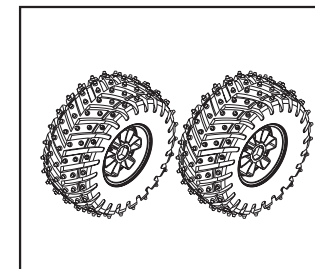
PD6085 SERVO SAVER LINKAGE



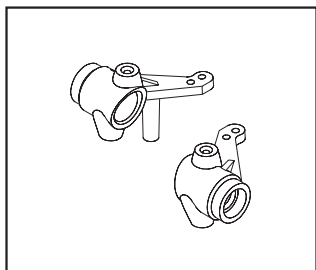
PD6108-B PLASTIC NUT (13), M3



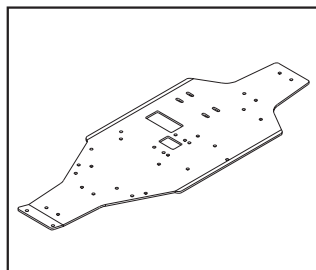
PD6109-S SERVO BRACKET SET



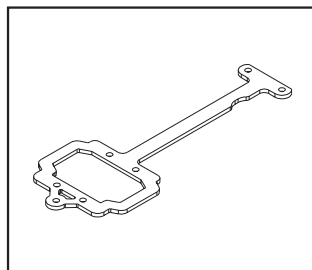
PD6191 WHEEL & TIRES SET (2),SSK



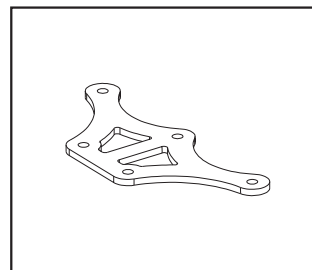
PD6425 FR KNUCKLE SET,SS



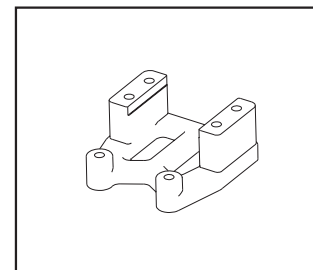
PD6426 CHASSIS, SSK V2



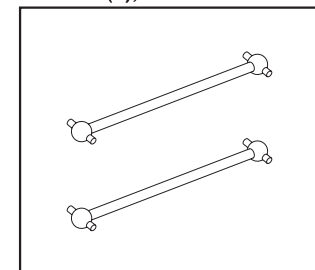
PD6427 TRANS. BRACE,SSK V2



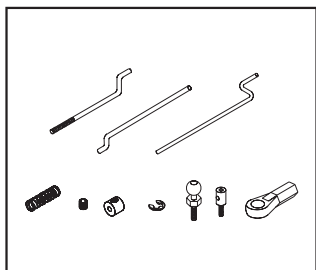
PD6428 FR TOP PLATE, SSK V2



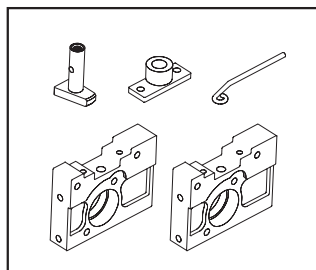
PD6429 ENGINE MOUNT(P), 1/10



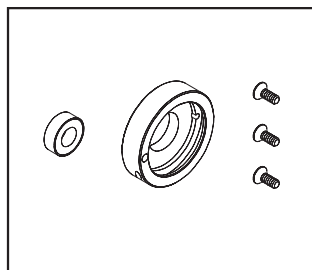
PD6430 CTR DRIVE SHAFT, SSK V2



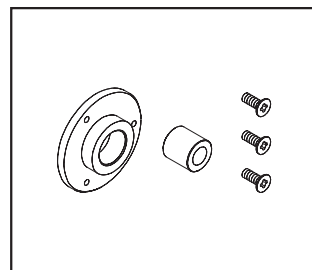
PD6432 LINKAGE ROD SET, SSK V2



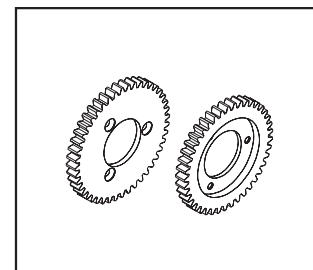
PD6433 CTR MOUNT&BRAKE, SSK V2



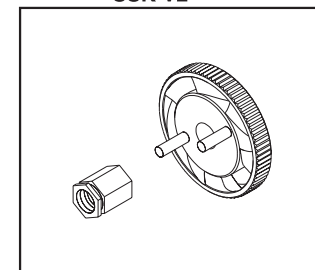
PD6435 2-S CLUTCH HOUSING, SS V2



PD6436 ONE WAY HUB SET, SSK V2

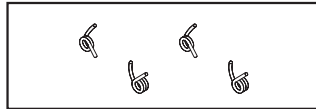


PD6437 SPUR GEAR, 38T/43T

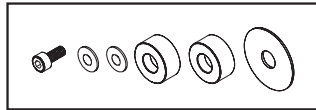


PD6438 FLYWHEEL SET, 1/10

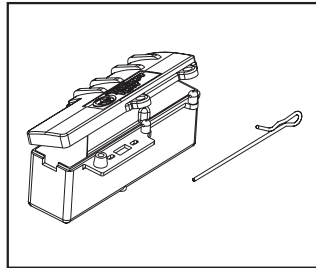
SSK V2 ARTR/RTR PARTS LIST



PD6439 CLUTCH SPRING(4),1/10



PD6440 C. BELL BRG&WASHER SET



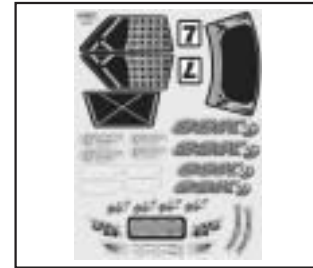
PD6441 BATTERY BOX,SSK V2



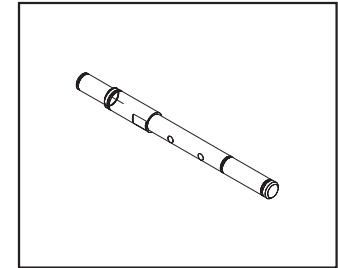
PD6442-L PRINTED BODY(L), SSK V2



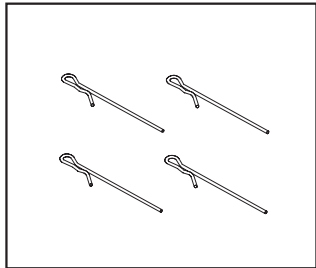
PD6442-R PRINTED BODY(R), SSK V2



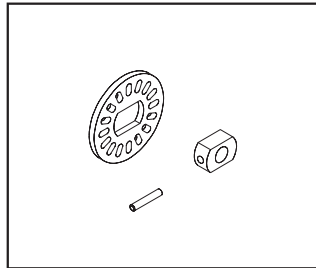
PD6443 DECAL, SSK V2



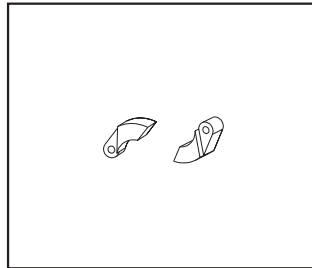
PD6457 2 SPEED SHAFT, SSK V2



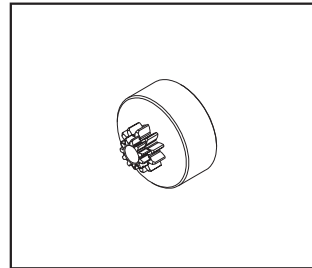
PD6459 BATT. BOX CLIPS, SSK V2



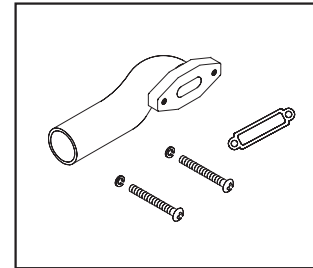
PD6462 BRAKE DISK,SSK V2



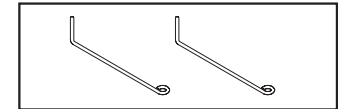
PD6464 CLUTCH SHOE(2), 1/10



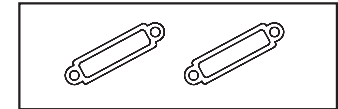
PD6465 CLUTCH BELL,11T/17T



PD6466 EXHAUST HEADER,SS



PD6468 PIPE MOUNT WIRE, SSK V2



PN1516 MUFFLER GASKET, 12/15

	M3 x 10mm (5)
	M3 x 10mm (12) M3 x 12mm (10) M3 x 14mm (2) M3 x 16mm (2) M3 x 25mm (8)
	M2.6 x 10mm (2) M3 x 10mm (17) M3 x 12mm (2)
	M3 (24)

PD0278 SCREW BAG

	ø3mm (8)
	M3 x 10mm (4) M3 x 14mm (4) M3 x 16mm (6) M3 x 34mm (8)
	R5 (5)
	M3 x 10mm (4) M3 x 12mm (8)
	M3 x 12mm (6)

	M3 x 10mm (2) M3 x 12mm (2)
	M3 x 3mm (4) M4 x 3mm (2)
	M3 x 10mm (14) M3 x 12mm (2) M3 x 14mm (2) M3 x 18mm (4) M3 x 30mm (2)
	M2 x 10mm (4)

PD0389 SCREW BAG

	M3 x 8mm (7) M3 x 10mm (2) M3 x 12mm (8) M3 x 14mm (4) M3 x 16mm (4) M3 x 25mm (4) M3 x 34mm (4)
	M2 (4) M2.6 (2) M3 (8)
	M3 x 10mm (4)

	M3 (4) M4 (4)
	Ø2mm (4) Ø2.6mm (2) Ø3mm (4) Ø4mm (4)
	Ø3mm (2) Ø4mm (2)
	M3 x 10mm (10)

	PD0396 M3x12mm(20) PD0397 M3x25mm(20) PD0966 M3x10mm(20)
--	--

CT PHILLIP TAP SCREW

	PD0862 O-RING (10)
--	--------------------

O-RING

	PD0866 R5 (10)
--	----------------

1/10 BODY CLIP

	PD0879 M3x 25mm (20) PD0880 M3x 10mm (20) PD1533 M3x 10mm (20) PD1534 M3x 12mm (20) PD1535 M3x 14mm (20) PD1536 M3x 16mm (20) PD6461 M3x 5mm (20)
--	---

BT PHILLIP MACHINE SCREW

	PD0881 M3X6 mm(20) PD0960 M3X10 mm(20)
--	---

SET SCREW

	PD0964 M3X 12mm(20) PD0968 M3X 10mm(20) PD1391 M3x 5mm (20)
--	---

BTW PHILLIP TAP SCREW

	PD0972 M4 (20)
--	----------------

LOCK NUT

	PD0973 ø4mm (20) PD0974 ø5mm (20) PD1199 ø3mm (20)
--	--

WASHER

	PD0976 ø2mm(20) PD0992 ø6mm(20)
--	------------------------------------

E-CLIP

	PD0983 M3x 300H (5)
--	---------------------

NYLON STRAPS

	PD1192 M3x 10mm(20) PD1673 M3x 16mm(20) PD6460 M2.6x 2mm(20)
--	--

CT PHILLIP MACHINE SCREW

	PD1197 M3 x 10mm(20)
--	----------------------

BT PHILLIP TAP SCREW

	M3 x 12mm (6)
	M3 x 25mm (8)
	M3 x 16mm (10)
	M3 x 12mm (4)

PD1629 SCREW BAG



SSK V2 ARTR/RTR SPARE PARTS LIST

DEC 2004

PART#	DESCRIPTION	NOTE
9286W	AIR FILTER, 12/15	
AN0790	FOAM FILTER	
AD2001	RR LOWER ARM, SS	
AD2002	FR LOWER ARM, SS	
AD2012	BUMPER, SS	
AD2555	FLYWHEEL COLLET, 1/10	
PD0167	TIE ROD	
PD0225	ANTENNA TUBE SET	
PD0254	TRANSMISSION CASE, DT10/SS	
PD0259	SERVO SAVER SET, SS	
PD0263	SUSPENSION HINGE PIN, SS	
PD0264	RR HUB, SS	
PD0267	DRIVE CUP, SS	
PD0278	SCREW BAG	
PD0281	WHEEL AXLE, TS/SS	
PD0389	SCREW BAG	
PD0396	CT P. TAP SCREW (20),M3x12	
PD0397	CT P. TAP SCREW (20),M3x34	
PD0862	SILICONE O-RING (10), SS/TS-N	
PD0866	BODY CLIP (10), R5	
PD0871	COUPLER TUBE	
PD0879	BT P.MACH. SCREW (20),M3x12	
PD0880	BT P.MACH. SCREW (20),M3x25	
PD0881	SET SCREW (20), 3x6mm	
PD0960	SET SCREW (20),M3x10	
PD0964	BT P.TAP SCREW (20),M3x12	
PD0966	CT P. TAP SCREW (20),M3x10	
PD0968	BTW PHILLIP TAP SCREW (20), 3x10mm	
PD0972	LOCK NUT(20), M4	
PD0973	WASHER (20),4mm	
PD0974	WASHER (20), 5mm	
PD0976	E-CLIP (20), 2mm	
PD0983	NYLON STRAPS, 112mm	
PD0984	HEX WHEEL ADAPTER/NUT,1/10	
PD0992	E-CLIP (20), 6mm	
PD1027	BRAKE PAD SET(4), SS	
PD1192	CT PHILLIP MACHINE SCREW (20), 3x10mm	
PD1197	BT P. TAP SCREW (20),M3x10	
PD1199	WASHER (20), 3mm	
PD1389	FUEL TANK, 75cc	

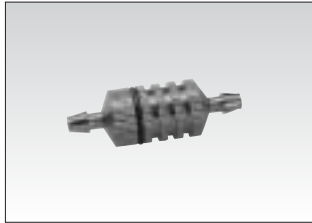
PART#	DESCRIPTION	NOTE
PD1391	BTW PHILLIP TAP SCREW (20), 3x5mm	
PD1440	2 SPD CLUTCH HUB,MTA4	
PD1533	BT P.M. SCREW(20),M3x10	
PD1534	BT P.M. SCREW(20),M3x12	
PD1535	BT P.M. SCREW(20),M3x14	
PD1536	BT P.M. SCREW(20),M3x16	
PD1623	RR DRIVE SHAT,SSK	
PD1624	FR CVA DRIVE SHAFTS, SSK	
PD1625	WHEEL,SSK	
PD1626	TIRES W/FOAM, SSK	
PD1628	SHOCK SET, SSK	
PD1629	SCREW BAG, SSK	
PD1630	BODY POSTS, SSK	
PD1633	DIFF BEARING SET, SSK	
PD1637	SHOCK MOUNT SET	
PD1640	WASHER SET,SSK	
PD1641	DIFFERENTIAL SET, SSK	
PD1648	TUNE PIPE SET, 1/10	
PD1673	CT P.M. SCREW (20),M3x16	
PD1735	DIFF PINION 11T/SSR	
PD6003	PILLOW BALL, DT10/SS	
PD6025	DIFFERENTIAL GASKET, DT10/SS	
PD6076	FR UPPER ARM, SS	
PD6078	AXLE BUSHING SET, SS	
PD6079-S	RR SHOCK TOWER, SS	
PD6085	SERVO SAVER LINKAGE, SS	
PD6108-B	PLASTIC NUT (13), M3	
PD6109-S	SERVO BRACKET SET, SS	
PD6191	WHEEL & TIRES SET (2), SSK	
PD6425	FR KNUCKLE SET,SS	
PD6426	CHASSIS, SSK V2	
PD6427	TRANS. BRACE,SSK V2	
PD6428	FR TOP PLATE,SSK V2	
PD6429	ENGINE MOUNT(P),1/10	
PD6430	CTR DRIVE SHAFT,SSK V2	
PD6432	LINKAGE ROD SET,SSK V2	
PD6433	CTR MOUNT&BRAKE,SSK V2	
PD6435	2-S CLUTCH HOUSING,SS V2	
PD6436	ONE WAY HUB SET,SSK V2	
PD6437	SPUR GEAR, 38T/43T	

PART#	DESCRIPTION	NOTE
PD6438	FLYWHEEL SET, 1/10	
PD6439	CLUTCH SPRING(4),1/10	
PD6440	C. BELL BRG&WASHER SET	
PD6441	BATTERY BOX,SSK V2	
PD6442-L	PRINTED BODY(L),SSK V2	
PD6442-R	PRINTED BODY(R),SSK V2	
PD6443	DECAL, SSK V2	
PD6457	2 SPEED SHAFT,SSK V2	
PD6459	BATT. BOX CLIPS,SSK V2	
PD6460	CT P.M. SCREW (20),M2.6x2	
PD6461	BT P.M. SCREW (20),M3x5	
PD6462	BRAKE DISK,SSK V2	
PD6464	CLUTCH SHOE(2), 1/10	
PD6465	CLUTCH BELL,11T/17T	
PD6466	EXHAUST HEADER,SS	
PD6468	PIPE MOUNT WIRE,SSK V2	
PN1516	MUFFLER GASKET,12/15	

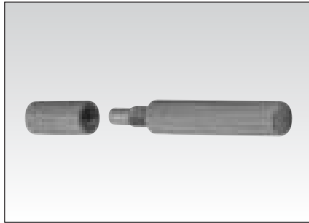
OPTIONAL PARTS LIST

PART#	DESCRIPTION	NOTE
1165P	FUEL FILTER(PURPLE),2CC	
1166P	PISTON LOCK TOOL(PURPLE)	
AA2034-R	CYLINDER HEAD,BIG BLOCK PRO-18BXS	
PD0398	TURNBUCKLE WRENCH,4mm	
PD0399	TURNBUCKLE WRENCH,5mm	
PD0561	METAL SHOCK SET	
PD0875	BEARING SET, d5xD11xW14	
PD1061	HEX WHEEL ADAPTOR	
PD1301	ALUM LOCK NUT M3 BLUE	
PD1302	ALUM LOCK NUT M3 RED	
PD1303	ALUM LOCK NUT M3 PURPLE	
PD1372	TUNED PIPE BLACK SIB	
PD1604	FR/RR SHOCK TOWER	
PD1605	TIE ROD,SS	
PD1606	FR/RR ARMLINKAGE ROD	
PD1607	CNC ALUM FRONT KNUCKLE	
PD1608	CNC ALUM REAR HUB	
PD1624	CVA DRIVE SHAFT, SSK	

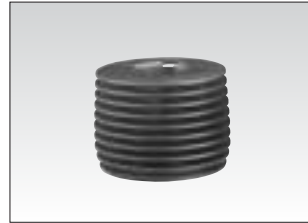
SS-SERIES OPTIONAL PARTS LIST



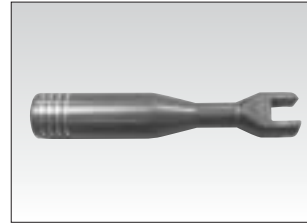
1165P FUEL FILTER (PURPLE),
2CC



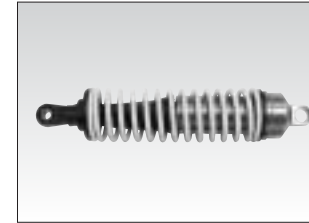
1166P PISTON LOCK TOOL
(PURPLE)



AA2034-R CYLINDER HEAD,
BIG BLOCK
PRO-18BXS



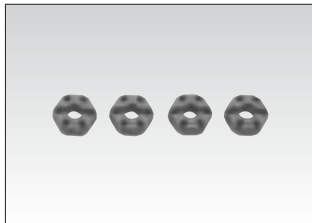
PD0398 TURNBUCKLE WRENCH,4mm
PD0399 TURNBUCKLE WRENCH,5mm



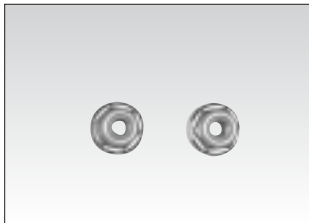
PD0561 METAL SHOCK SET



PD0875 BEARING SET,
d5xD11xW4



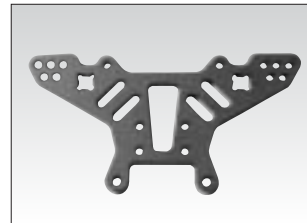
PD1061 HEX WHEEL ADAPTOR



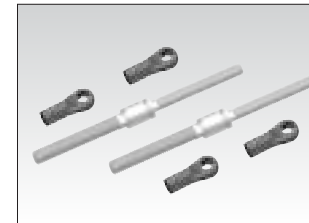
PD1301 ALUM LOCK NUT, M3 BLUE
PD1302 ALUM LOCK NUT, M3 RED
PD1303 ALUM LOCK NUT, M3 PURPLE



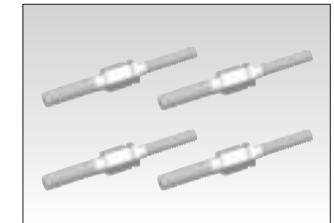
PD1372 TUNED PIPE,
BLACK SIB



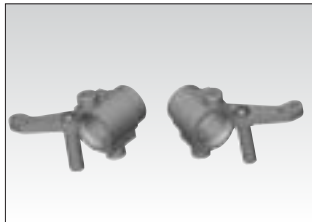
PD1604 FR/RR SHOCK TOWER



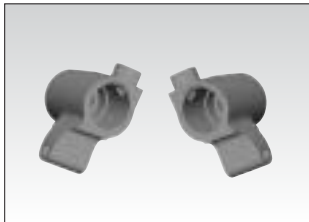
PD1605 TIE ROD



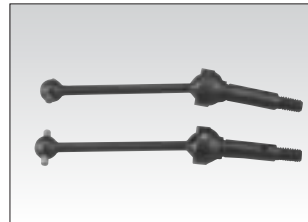
PD1606 FR/RR ARM LINKAGE
ROD



PD1607 CNC ALUM FRONT
KNUCKLE



PD1608 CNC ALUM REAR HUB



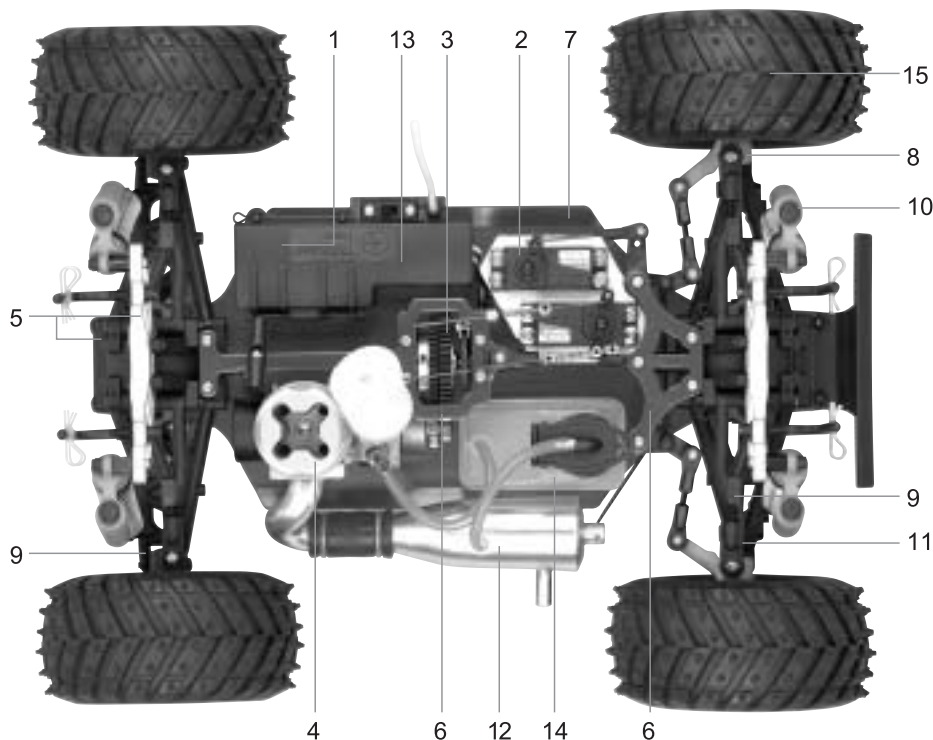
PD1624 CVA DRIVE SHAFT SSK



SSK V.2

1/10 4WD

NITRO POWERED MONSTER TRUCK



- 1) 2-Channel radio installed
- 2) Metal gear steering servo
- 3) 2 Speed transmission equipped
- 4) Super power PRO-18BXS pull start engine
- 5) Rigid bulkhead & reinforced 8.5mm shocks tower installed
- 6) Aluminum front servo saver top plate and transmission brace.
- 7) 3mm Countersunk anodized aluminum chassis
- 8) Metal FR knuckle
- 9) Double wishbone suspension, front/rear
- 10) Long travel, oil-filled composite shocks
- 11) Heavy duty CVA shaft, front
- 12) Performance manifold and metal tuned pipe
- 13) New enclosed radio box
- 14) 75cc, low C.G. fuel tank
- 15) Oversize aggressive truck tire & wheel

Specification
Overall Length: 410mm
Width: 325mm
Height: 210mm
Wheel Base: 275mm
Weight: 2300g
Max Ground Clearance: 34mm
Wheel: 125mm in diameter

INCLUDED



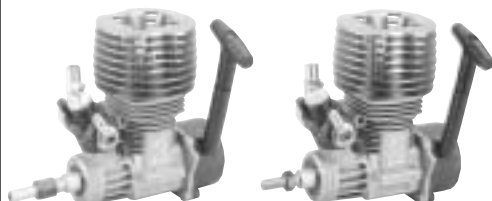
ACCESSORIES



No.8118
S2008

Features:

- The most reliable high torque motor
- Bearings support
- Standard size to fit most vehicles
- High impact material
- Brand new fashion design look
- More precise operating performance
- Super Precise Metal gears equipped for MG version



No.9461 EVO-12X
No.9463 EVO-15X

No.9465 EVO-12X(TH)
No.9467 EVO-15X(TH)



Glow Starters



No.2150 1.8AH Long Glow Starter w/110V 2P
No.2151 1.8AH Long Glow Starter w/230V 2P
No.2152 1.8AH Long Glow Starter w/230V 3P

No.1116

5-Way Wrench



No.1103

Hex Driver Set



3.0mm 2.5mm 2.0mm 1.5mm

No.1261

600cc Fuel Bottle

No.1266

300cc Fuel Bottle



JD6473